

9 pin no tap 2026



Oil Per Board: **55 uL** Oil Pattern Distance: **41 Feet** Volume Oil Total: **21.23 mL** Total Boards Crossed: **386 Boards**

Forward Oil Total: **9.405 mL** Reverse Oil Total: **11.825 mL**
 Forward Boards Crossed: **171 Boards** Reverse Boards Crossed: **215 Boards**

	Start	Stop	Loads	Speed	Crossed	Start	End	Feet	T.Oil
1	2L	2R	2	18	74	0.0	2.5	2.5	4070
2	8L	8R	1	18	25	2.5	5.0	2.5	1375
3	10L	10R	2	18	42	5.0	10.1	5.1	2310
4	13L	13R	2	18	30	10.1	15.2	5.1	1650
5	2L	2R	0	18	0	15.2	24.0	8.8	0
6	2L	2R	0	22	0	24.0	33.0	9.0	0
7	2L	2R	0	30	0	33.0	41.0	8.0	0

Navigation: < < > > Forward Reverse More Info

Report Date
5/13/2026

Conditioner: Type
In or Select One

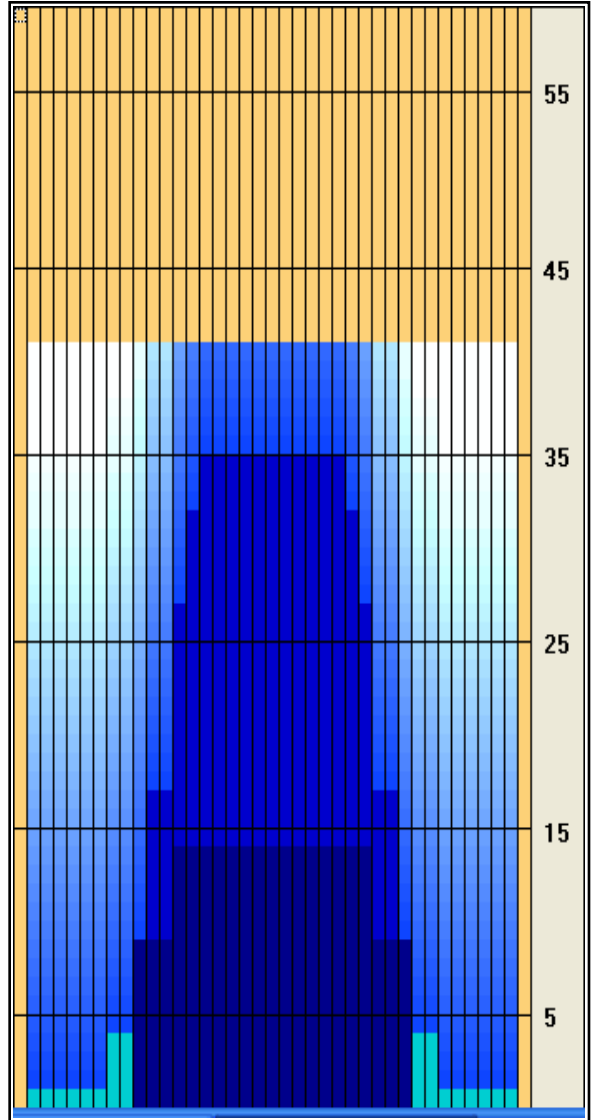
TransferType:
Type In or Select One

Forward Oil

Reverse Oil

Combined Oil

Buff Area



	Start	Stop	Loads	Speed	Crossed	Start	End	Feet	T.Oil
1	2L	2R	0	30	0	41.0	35.0	-6.0	0
2	15L	15R	1	22	11	35.0	31.9	-3.1	605
3	14L	14R	2	18	26	31.9	26.8	-5.1	1430
4	13L	13R	4	18	60	26.8	16.6	-10.2	3300
5	11L	11R	4	14	76	16.6	8.7	-7.9	4180
6	10L	10R	2	10	42	8.7	5.9	-2.8	2310
7	2L	2R	0	10	0	5.9	0.0	-5.9	0

Navigation: < < > > Forward Reverse More Info

Arrow Zone Ratios

Item	2-5L:16L-20	6-10L:16:-20	11-15L:16L-20	16L-20:20-16R	16L-20:20-16R	20-16R:15-11R	20-16R:10-6R	20-16R:5-2R
ul Arrow	110	187	858	1100	1100	858	187	110
Zone Ratio	10	5.88	1.28	1	1	1.28	5.88	10

Track Zone Ratios

Item	3L-7L:18L-18R	8L-12L:18L-18R	13L-17L:18L-18R	18L-18R:17R-13R	18L-18R:12R-8R	18L-18R:7R-3R
Description	Outside Track:Middle	Middle Track:Middle	Inside Track:Middle	Middle: Inside Track	Middle:Middle Track	Middle:Outside Track
Track Zone Ratio	10	2.86	1.04	1.04	2.86	10

